



# CAPITAL PLACE

25-53 CAPITAL DRIVE  
WEST SPRINGFIELD, MA

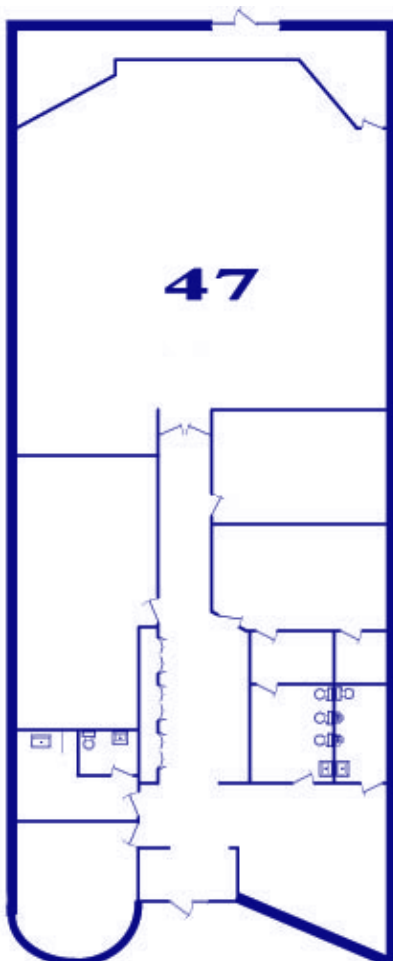
Office / Training space available in a contemporary multi-purpose building located in the center of West Springfield's most rapidly developing business area.

Zoned Business A

Close, Easy access to the Interstate and State highway system.

Space includes acoustical drop ceiling, florescent lighting, individually controlled HVAC system and wall to wall carpeting.

Free paved parking along with a private truck dock is included.



- 47 Capital Dr.
- 5,961 Square Foot
- Gas-fired heating and Air conditioning
- Handicapped Multiple Stall Restrooms
- Handicapped Accessible
- Large Auditorium
- 4 Private Offices
- Reception Area
- Conference Room
- Break Room
- Records Storage Room
- Ample Closet Space
- \$10.75 psf annual NNN
- \$1.75 psf estimated NNN expenses
- Brokers Protected



Dan Burack  
P.O. Box 414  
East Longmeadow, MA 01028

Phone: (413) 537-4132  
Fax (413) 525-1538  
Email: [dburack@yahoo.com](mailto:dburack@yahoo.com)